

# LIBERTYVILLE OFFICE CONDO FOR SALE OR LEASE



- Approx. 1,500 Sq. Ft.
- Beautiful Office Space For Sale Or For Lease
- Abundant Parking
- Move In Ready Suite!
- Partially Finished Lower Level bonus space
- Close To Downtown

**1013 W. PARK AVE.  
LIBERTYVILLE, IL 60048**

**TIM HART**  
(847)924-5864  
[tim@protectrealty.com](mailto:tim@protectrealty.com)

**PROTECT REALTY**  
350 N. Milwaukee Ave  
Suite 201  
Libertyville, IL 60048

For Sale Price: \$275,000  
Lease Price: \$23.00 Per SF

**PROTECT REALTY**

# DYMOND PARK PROFESSIONAL BUILDINGS

## 1013 W. Park Ave., Libertyville

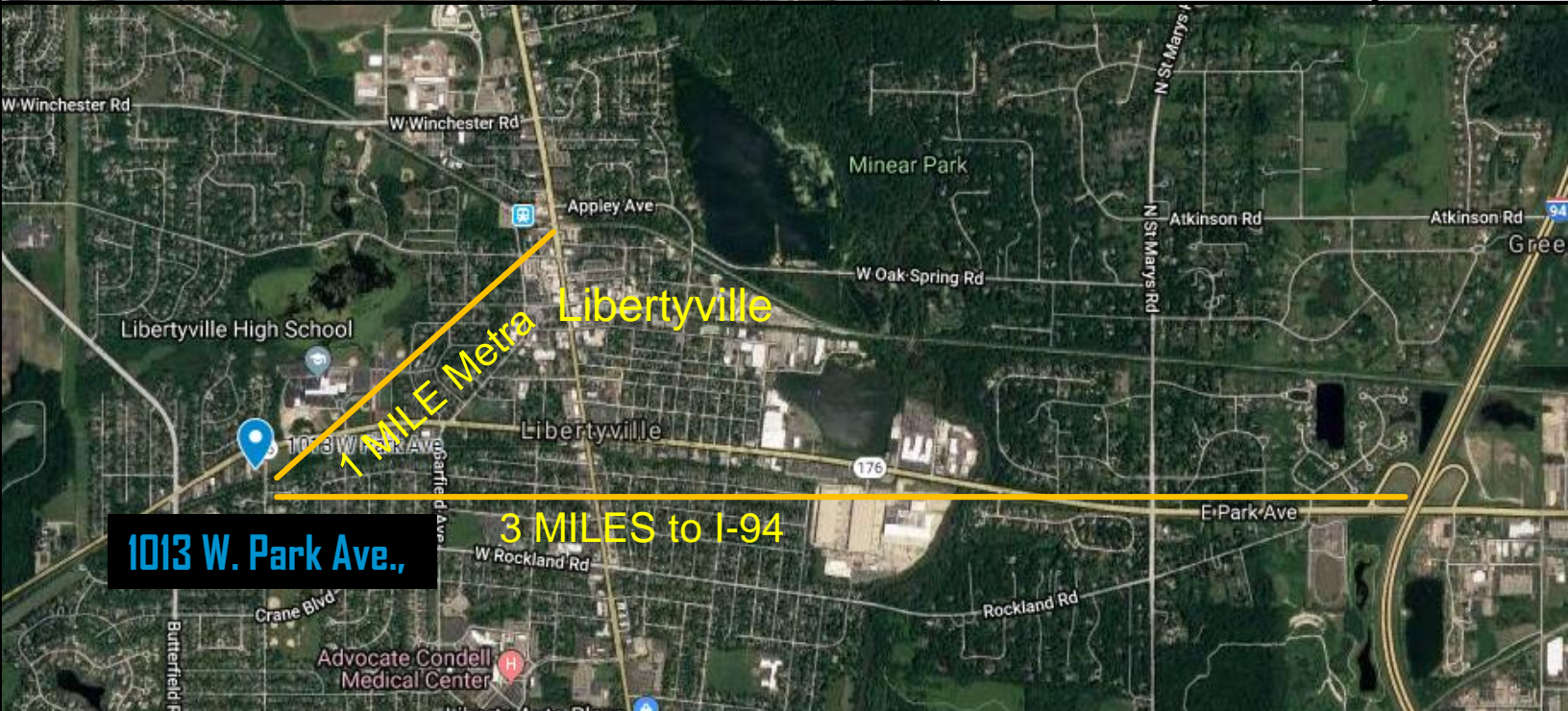
TIM HART

847-924-5864

[TIM@PROTECTREALTY.COM](mailto:TIM@PROTECTREALTY.COM)



- Approx. 1,500 Sq. Ft.
- Partially Finished Lower Level space (1,000 SF)
- Move In Ready Condition
- PIN: 11-20-206-028
- Year Built: 1993
- Taxes: \$7,283.98 (2018)
- CAM Expenses: \$6,000
- Separate Utilities
- Parking: 10 spaces
- Prime Location close to Downtown Libertyville



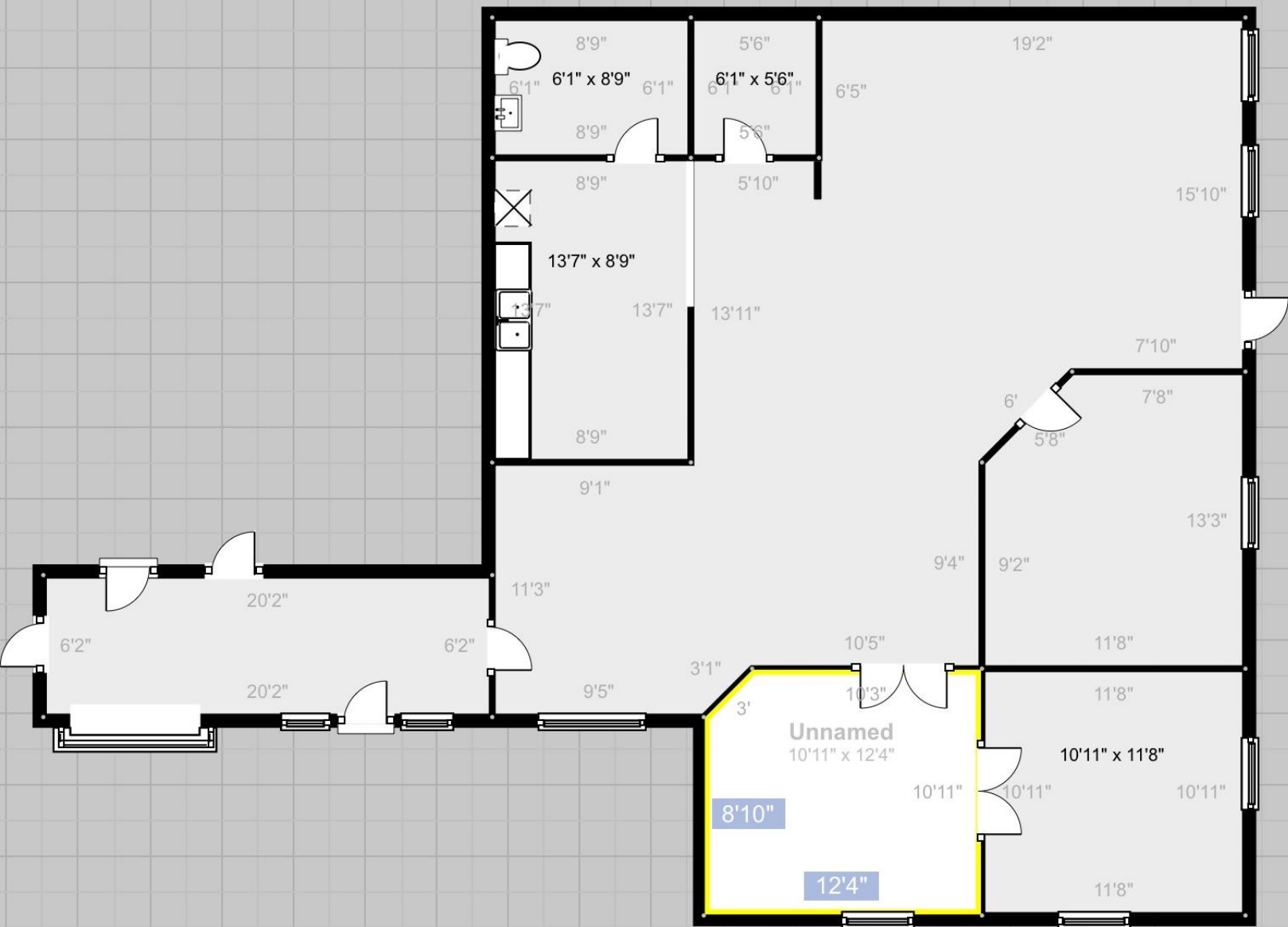
**PROTECT REALTY**

# DYMOND PARK PROFESSIONAL BUILDINGS

## 1013 W. Park Ave., Libertyville

TIM HART  
847-924-5864  
[TIM@PROTECTREALTY.COM](mailto:TIM@PROTECTREALTY.COM)

### First Floor Plan – Approx. 1,500 SF



# DYMOND PARK PROFESSIONAL BUILDINGS

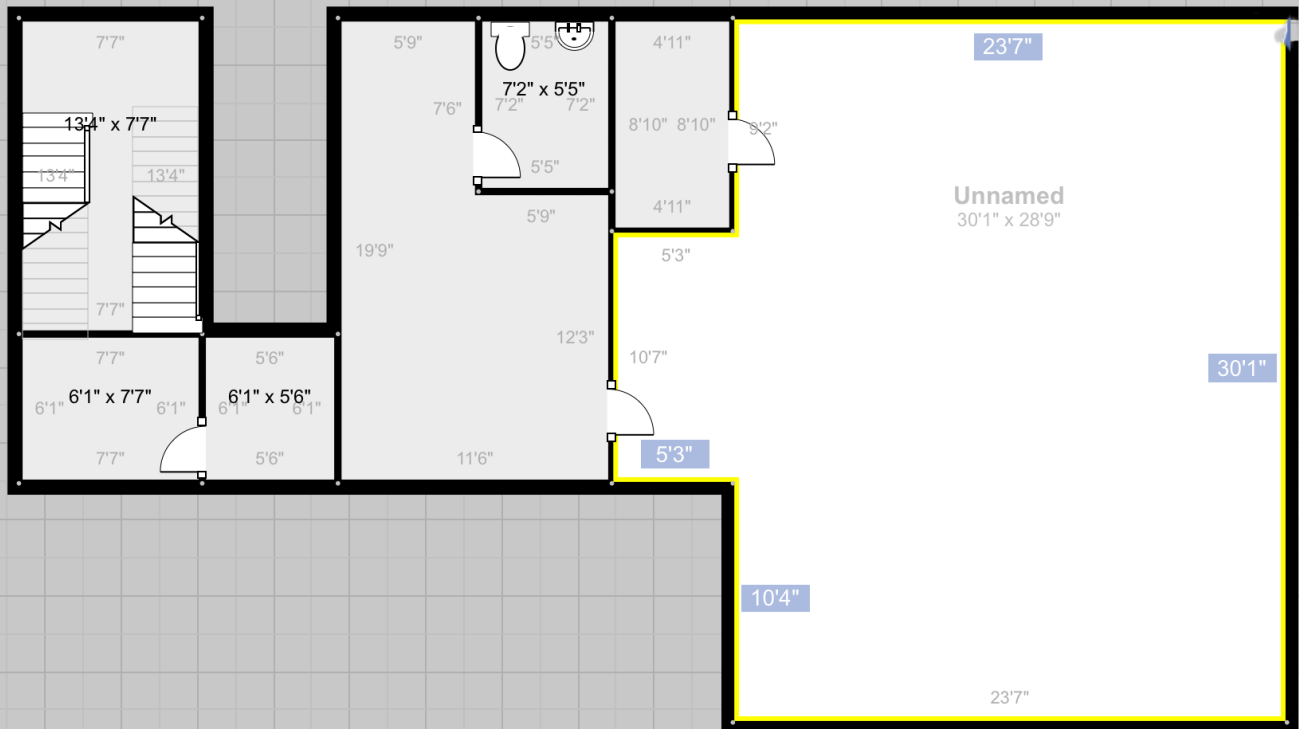
## 1013 W. Park Ave., Libertyville

TIM HART

847-924-5864

[TIM@PROTECTREALTY.COM](mailto:TIM@PROTECTREALTY.COM)

### Lower Level Plan - Partially finished



# DYMOND PARK PROFESSIONAL BUILDINGS

## 1013 W. Park Ave., Libertyville

---

**TIM HART**

847-924-5864

[TIM@PROTECTREALTY.COM](mailto:TIM@PROTECTREALTY.COM)



Although information has been obtained from sources deemed reliable, neither Owner nor Protect Realty makes any guarantees, warranties or representations, express or implied, as to the completeness or accuracy as to the information contained herein. Any projections, opinions, assumptions or estimates used are for example only. There may be differences between projected and actual results, and those differences may be material. The Property may be withdrawn without notice. Protect Realty accepts no liability for any loss or damage suffered by any party resulting from reliance on this information.

**PROTECT  REALTY**

# DYMOND PARK PROFESSIONAL BUILDINGS

## 1013 W. Park Ave., Libertyville

TIM HART

847-924-5864

[TIM@PROTECTREALTY.COM](mailto:TIM@PROTECTREALTY.COM)



Although information has been obtained from sources deemed reliable, neither Owner nor Protect Realty makes any guarantees, warranties or representations, express or implied, as to the completeness or accuracy as to the information contained herein. Any projections, opinions, assumptions or estimates used are for example only. There may be differences between projected and actual results, and those differences may be material. The Property may be withdrawn without notice. Protect Realty accepts no liability for any loss or damage suffered by any party resulting from reliance on this information.

**PROTECT  REALTY**

# DYMOND PARK PROFESSIONAL BUILDINGS

## 1013 W. Park Ave., Libertyville

TIM HART

847-924-5864

[TIM@PROTECTREALTY.COM](mailto:TIM@PROTECTREALTY.COM)



Although information has been obtained from sources deemed reliable, neither Owner nor Protect Realty makes any guarantees, warranties or representations, express or implied, as to the completeness or accuracy as to the information contained herein. Any projections, opinions, assumptions or estimates used are for example only. There may be differences between projected and actual results, and those differences may be material. The Property may be withdrawn without notice. Protect Realty accepts no liability for any loss or damage suffered by any party resulting from reliance on this information.

# PROTECT REALTY